

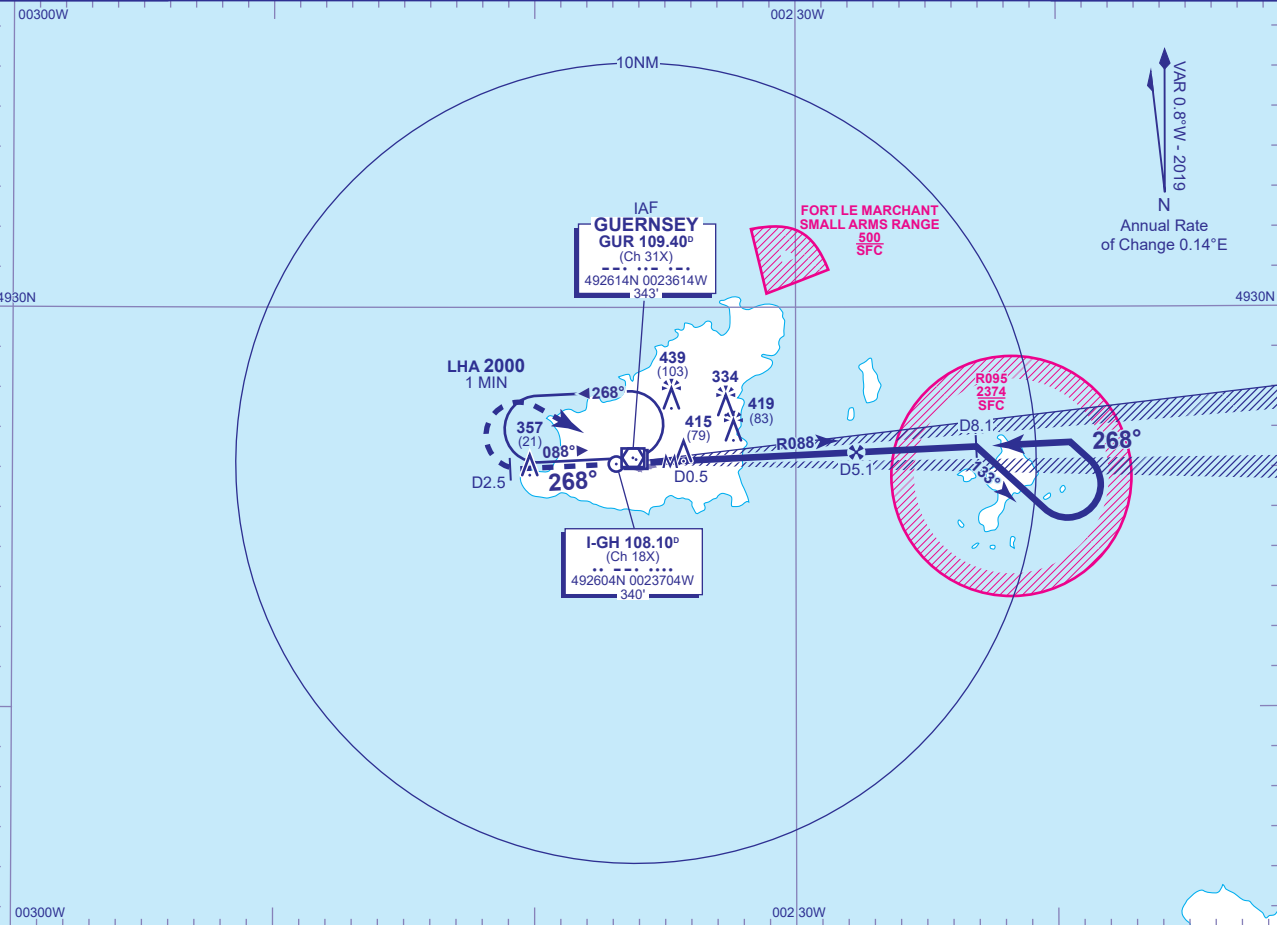
INSTRUMENT APPROACH CHART - ICAO

GUERNSEY
LOC/DME/VOR
RWY 27
(ACFT CAT A,B,C,D)



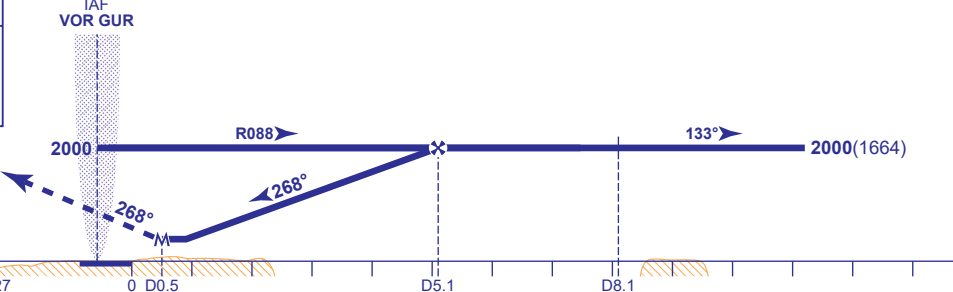
APP	128.655	GUERNSEY APPROACH	AD ELEVATION	336
TWR	119.955	GUERNSEY TOWER	THR ELEVATION	336
GMC	121.805	GUERNSEY GROUND	OBSTACLE ELEVATION 439 AMSL (103) (ABOVE THR)	
RAD	124.505	GUERNSEY RADAR		
ATIS	109.400	GUERNSEY INFORMATION	BEARINGS ARE MAGNETIC	

TRANSITION ALTITUDE
5000



RECOMMENDED PROFILE Gradient 5.24%, 320FT/NM					
DME I-GH	5	4	3	2	1
ALT(HGT)	1980(1644)	1660(1324)	1340(1004)	1020(684)	700(364)

MAPt D0.5 I-GH
Continuous climb to **3000**, initially climb straight ahead to **2000**, or **I-GH DME 2.5** outbound whichever is the later, then turn right to **VOR GUR** at **3000**, or as directed.



Aircraft Category		A	B	C	D	Rate of descent	G/S KT	160	140	120	100	80
OCA (OCH)	Procedure	670(334)	670(334)	670(334)	670(334)		FT/MIN	850	740	640	530	420
VM(C)OCA (OCH AAL)	Total Area	830(494)	830(494)	930(594)	1030(694)							

- NOTE** 1 Authority to penetrate restricted area R095 will be granted by Guernsey ATC prior to start of this procedure.
2 Aircraft will normally be required to hold not lower than 3000.

CHANGE (10/23): GUERNSEY RADAR FREQUENCY.